



NMHBA Office Staff

New Mexico Home Builders Association
505-344-7072, Toll Free 1-800-523-8421 FAX: 505-344-3103
E-mail: info@nmhba.org or Website: www.nmhba.org
Executive VP & CEO, Jack C. Milarch, Jr.
Governmental Affairs Director, Melanie Teeter
Office Manager, Nancy Barron
Bookkeeper/Bonding/Meeting Admin, Melinda Bolivar
Receptionist, Kami Showalter

NMHBA 2011 Senior Officers

President, Mike Buechter
Past President, Derrick Childers
1st VP/President Elect, Mike Richards
Associate Vice President, Diana Lucero
Secretary Treasurer, Pat Casey

2011 Local HBA Presidents

HBA of Central New Mexico, Garret Price
South Eastern New Mexico HBA, Buddy Harbuck
HBA of Eastern New Mexico, Mark Carpenter
Building Industry Association of Southern New Mexico,
Affil. w/NAHB, Farrell Thurston
Lincoln County HBA, Juan Olvera
San Juan County HBA, Dennis Ivie
Santa Fe Area HBA, Linda Gammon
BCA of Otero County, Jessica Beach
Southwest NM HBA, Pat Casey

NAHB Representatives

National Associate Director, Betty Shaum
State Representative, Peter Merrill
National Director, Mike Richards
NAHB BUILD-PAC Trustee, Skip Mead

Affiliated Organizations

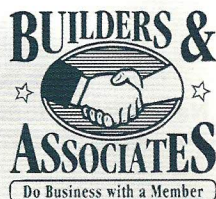
Association Services Corporation
dba New Mexico License Bonding
Phone: 505-344-7277 Fax: 505-344-3103

Builders Trust of New Mexico
Workers' Compensation Insurance
Phone: 505-345-3477 Fax: 505-344-7245
Executive VP & CEO, Jack C. Milarch, Jr.
COO, Randy Akin
Chairman, Bob Dolgener

New Mexico Home Builders Political Action Fund
NMHB PAF Chair, Randy Crowder

Graphic Design - The Graphics Station
505-480-8687

Printing - LithExcel Printing
505-243-8560



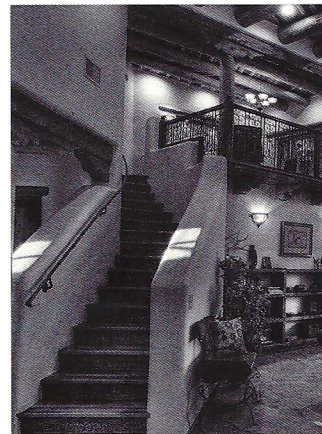
Special Features

- 6 Summary of Construction Industries Commission Meeting
- 8 Top 10 Reasons to do Business with an Active Associate Member
- 10 Notice to all NMHBA Members

Regular Features

- 2 Membership Statistics
- 3 Message from the President - Looming Lame Duck Status
- 4 Message from the Executive Vice President and CEO - Workers' Compensation Administration Reverses Stand On No-Employee Contractor Coverage Requirements
- 12 Calendar

About The Cover



Classic New Mexico Homes wanted this new house in Las Cruces to appear as if it were built at the turn of the century, but with modern amenities. They constructed this energy efficient traditional pueblo revival adobe home using a lot of reclaimed material, not only for aesthetic reasons, but also to use many

old and beautiful materials that might have otherwise ended up in the landfill. Many of the reclaimed materials came from New Mexico and were salvaged from buildings that were demolished decades ago to make room for Interstate 25. The walls range from 24-28 inches thick. The hand-carved stairs were done by Dan Makens of Trails End Wood Works.

Photo by Wayne Suggs of Classic New Mexico Homes